

Running, Shifting and Positioning Tools

6 Type B Self Releasing Positioning Tool

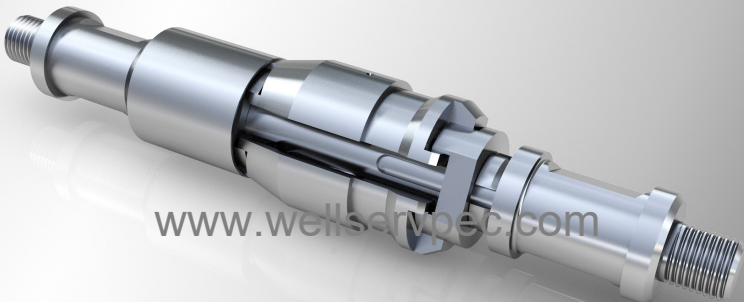
Type B Self Releasing Positioning Tool is used to shift the inner sleeve of the Sliding Side Door (SSD) to its open or closed position. The Keys are designed with one sloped end and the other with 90-degree shoulder, where one end will slide through the sleeve and the other to engage and shift the SSD. It also

incorporates an automatic self-release feature where the tool will only be released when travel to its fully open or closed position. This tool will not pass through a no.1 Type S Nipple.

Available tool sizes as shown. Please contact our sales office for further enquiries.

SSD I.D.	O.D. (Keys Expanded)	O.D. (Key Retracted)	Fishneck O.D.	Connection Type
1.375"	1.63"	1.35"	1.00"	5/8"-11UN
1.500"	1.69"	1.49"	1.187"	15/16"-10UN
1.625"	1.89"	1.62"	1.187"	15/16"-10UN
1.710"	2.12"	1.69"	1.187"	15/16"-10UN
1.781"	2.07"	1.75"	1.375"	15/16"-10UN
1.812"	2.07"	1.75"	1.375"	15/16"-10UN
1.875"	2.16"	1.84"	1.375"	15/16"-10UN
2.188"/2.313"	2.60"	2.15"	1.750"	15/16"-10UN
2.562"	2.97"	2.53"	1.750"	15/16"-10UN
2.750"	3.03"	2.73"	2.313"	1 1/16"-10UN
2.813"	3.16"	2.72"	2.313"	1 1/16"-10UN
3.125"	3.48"	3.06"	1.750"	15/16"-10UN
3.313"	3.61"	3.25"	2.313"	1 1/16"-10UN
3.437"	3.93"	3.41"	2.313"	1 1/16"-10UN
3.688"	4.15"	3.66"	3.125"	1 1/16"-10UN
3.813"	4.09"	3.75"	3.125"	1 1/16"-10UN
4.125"	4.36"	3.86"	2.313"	1 1/16"-10UN
4.313"/4.437"	4.875"	4.25"	2.313"	1 1/16"-10UN
4.562"	5.00"	4.52"	3.125"	1 1/16"-10UN
5.625"	5.80"	5.23"	3.125"	1 1/16"-10UN

Toolstring
Equipment



www.wellservpec.com